



PLOT 35, Dartford (UK)



Projekt | Project

PLOT 35, Dartford (UK)

Baujahr | Year completed

2014

Holzbau | Timber Contractor

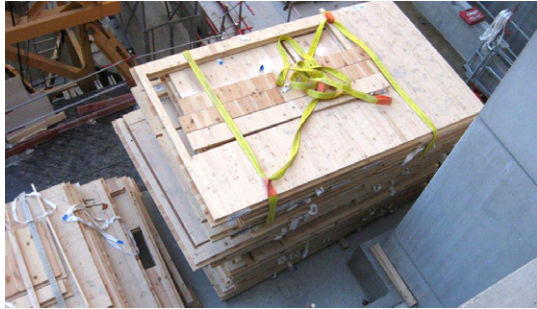
Constructional Timber Ltd.

Statik | Engineering

AECOM Ltd.

Materialien | Materials

BSP/BSH | CLT/Glulam



Escale Confluence, Lyon (FR)



Projekt | Project

Escale Confluence, Lyon (FR)

Baujahr | Year completed

2013

Holzbau | Timber Contractor

Eiffage Construction Rhône

Materialien | Materials

BSP | CLT



Franklin Elementary School, Franklin, WV (USA)



Projekt Project	Franklin Elementary School, Franklin, WV (USA)
Baujahr Year completed	2014
Architekt Architect	Pamela J. Wean, AIA
Holzbau Timber Contractor	LignaTerra LLC
Bauunternehmer Contractor	City Construction Inc.
Statik (Holzbau) Engineering (Timber)	IB von Fragstein GmbH
Materialien Materials	BSP/BSH CLT/Glulam



Wohnhaus Handlos, Pinsdorf (AT)



Projekt | Project

Wohnhaus Handlos, Pinsdorf (AT)

Baujahr | Year completed

2014

Holzbau | Timber Contractor

Herbert und Peter Handlos GesmbH

Materialien | Materials

BSP | CLT



Langholm Primary School, Langholm (UK)



Projekt | Project Langholm Primary School, Langholm (UK)
Baujahr | Year completed 2013
Holzbau | Timber Contractor Crendon Timber Engineering Ltd.
Materialien | Materials BSP/BSH | CLT/Glulam



Leek College, Leek (UK)



Projekt | Project

Leek College, Leek (UK)

Baujahr | Year completed

2013

Holzbau | Timber Contractor

Constructional Timber Ltd.

Materialien | Materials

BSP/BSH | CLT/Glulam





Projekt | Project

Lift Shaft Projects (UK)

Baujahr | Year completed

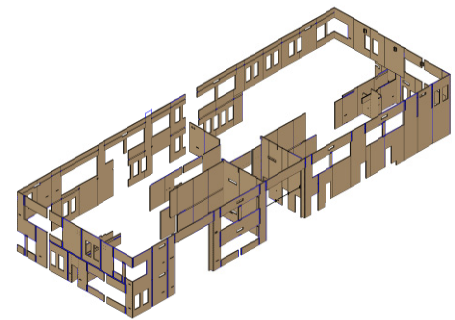
2013 + 2014

Holzbau | Timber Contractor

Constructional Timber Ltd.

Materialien | Materials

BSP | CLT



Nutsschool, Den Haag (NL)



Projekt | Project

Nutsschool, Den Haag (NL)

Baujahr | Year completed

2014

Holzbau | Timber Contractor

Korlam n.v.

Materialien | Materials

BSP/BSH | CLT/Glulam



Paultons Park, Romsey (UK)



Projekt | Project

Paultons Park , Romsey (UK)

Baujahr | Year completed

2013

Holzbau | Timber Contractor

Crendon Timber Engineering Ltd.

Materialien | Materials

BSH | Glulam



Buschmann Residence, Søgne (NO)



Projekt | Project Buschmann Residence, Søgne (NO)
Baujahr | Year completed 2014
Architekt | Architect Markus Buschmann
Holzbau | Timber Contractor Czelusta Trebygg & Takteknikk
Materialien | Materials BSH/Verbindungsmittel | Glulam/Connection Materials